

**Project Facilities**

- ▲ Powerhouse
- Dam
- - - Tunnel
- ══ Penstock

**Transportation**

- Major Road
- Minor Road

**Hydrography**

- Watercourse
- Water Body

**Designated Boundary**

- - - County Boundary
- Granite Chief Wilderness

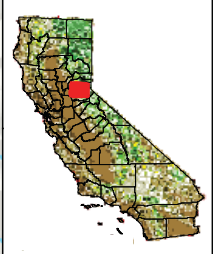
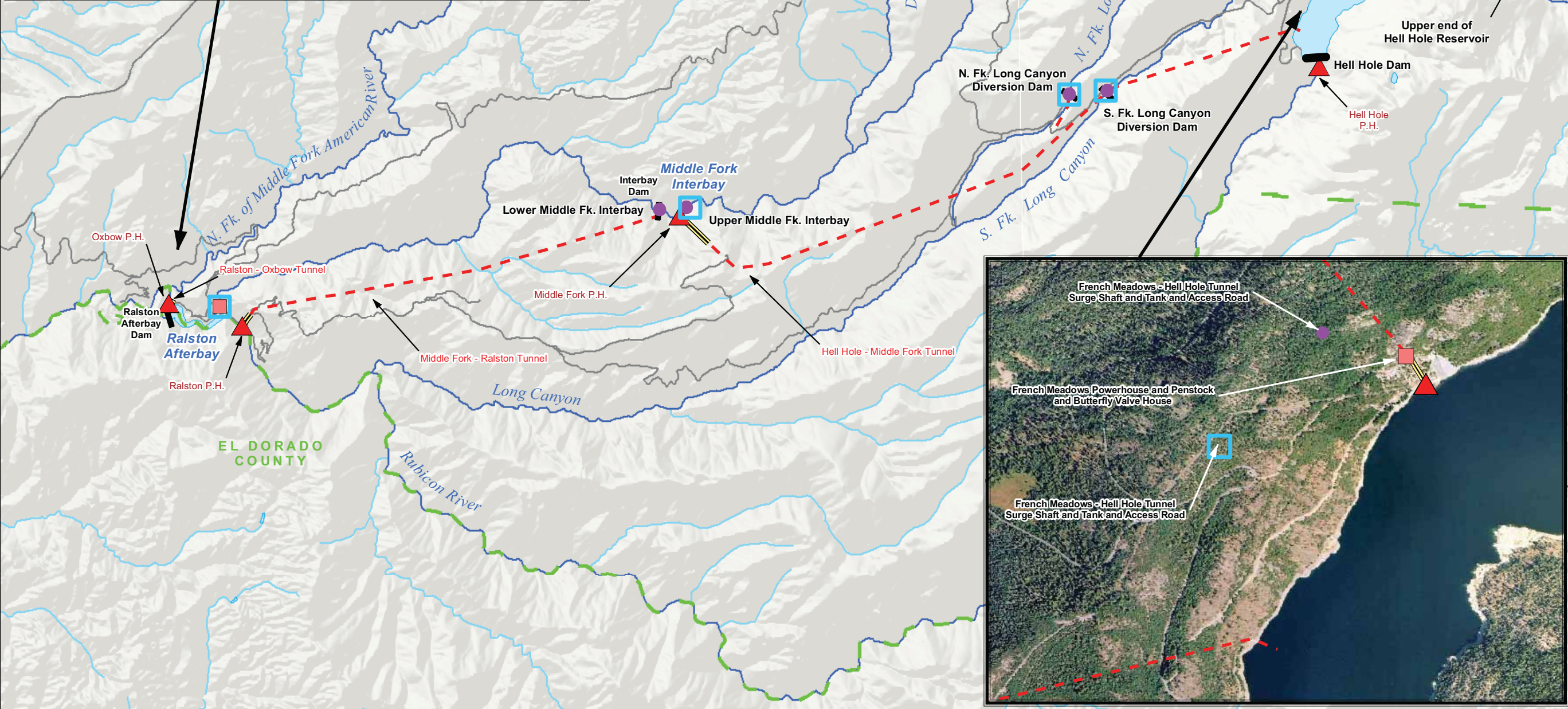
**Survey Type**

- Visual Roost
- Handheld Acoustic
- Infrared Video

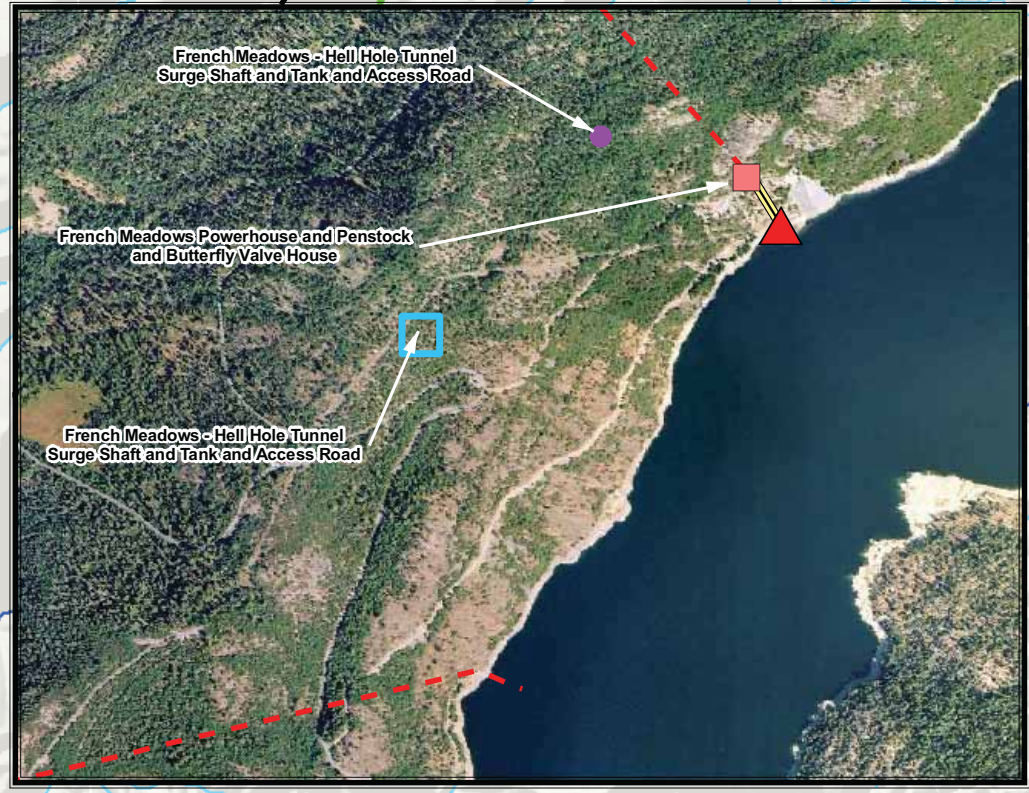
**PCWA**  
Placer County Water Agency  
Middle Fork American River Project


**Map 1a**  
**2007 Special-Status Bat Reproductive Survey Locations**

0 0.5 1 2 Miles  
Projection: CA State Plane, Zone 2  
Datum: NAD 83  
Date: 2/25/08



- Project Facilities**
- ▲ Powerhouse
  - Dam
  - Tunnel
  - Penstock
- Transportation**
- Major Road
  - Minor Road
- Hydrography**
- Watercourse
  - Water Body
- Designated Boundary**
- County Boundary
  - Granite Chief Wilderness
- Survey Type**
- Mist Net
  - 5-Night Acoustic
  - Long-Term Acoustic







Placer County Water Agency  
Middle Fork American River Project

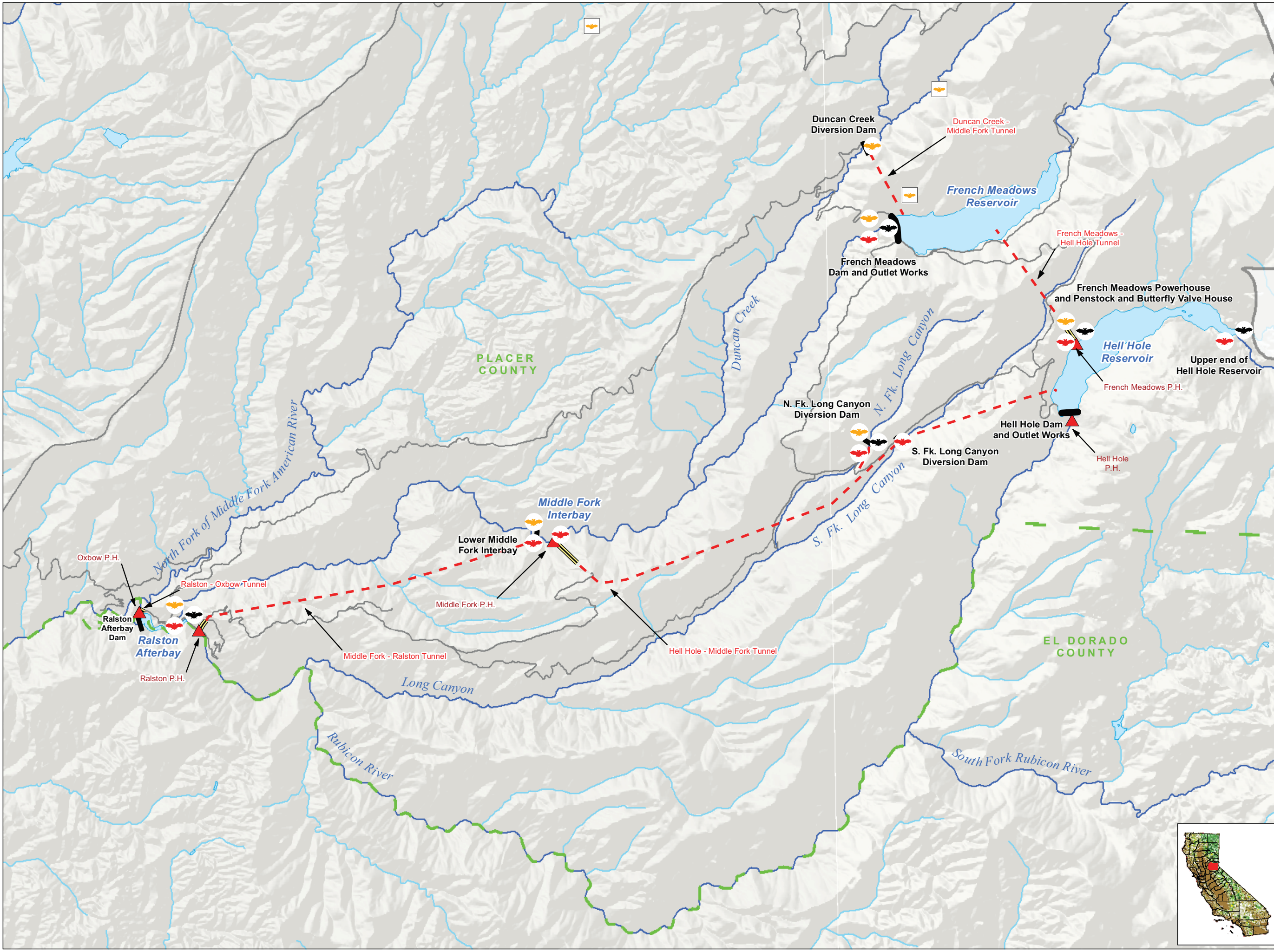
**Map 1b**

**2007 Special-Status Bat  
Seasonal Habitat Use Survey Locations**





Projection: CA State Plane, Zone 2  
Datum: NAD 83  
Date: 2/25/08



**Project Facilities**

- Powerhouse
- Dam
- Tunnel
- Penstock

**Transportation**

- Major Road
- Minor Road

**Hydrography**

- Watercourse
- Water Body

**Designated Boundary**

- County Boundary
- Granite Chief Wilderness


**Bat Survey Data**

Documented Occurrences (prior to 2007)

- pallid bat

PCWA Special-Status Bat Surveys (2007)

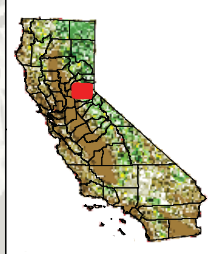
- pallid bat
- Townsend's big-eared bat
- western red bat



Placer County Water Agency  
Middle Fork American River Project

Map 2

**PCWA Special-Status Bat  
Seasonal Use Results and  
Historic Occurrences (2007)**



0 0.5 1 2 Miles

Projection: CA State Plane, Zone 2  
Datum: NAD 83

Date: 2/26/08